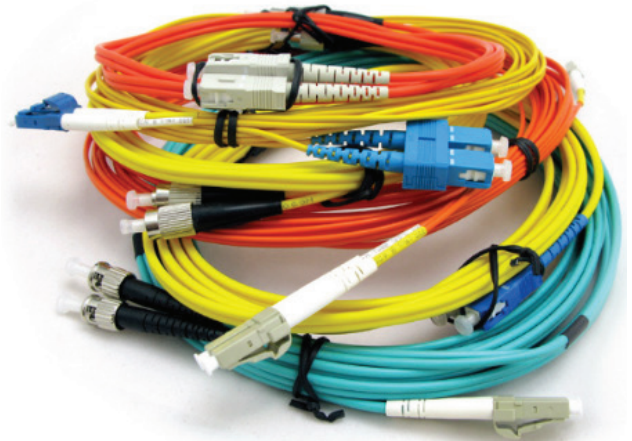




Fibre Optic Patch Cable is also known as fibre optic jumper or fibre optic patch cord. It is composed of a fibre optic cable terminated with different connectors on the ends.

Fibre optic patch cables are used in two major application areas: computer work station to outlet and patch panels or optical cross connect distribution centre. FibreBox provides various types of fibre optic patch cables including single-mode, multimode, multi-core, armoured patch cables, as well as fibre optic pigtails and other special patch cables. For most of the patch cables, the SC, ST, FC, LC, MU, MTRJ, E2000 connectors (APC/UPC polish) are all available.



Features & Benefits

- Factory machine polished ferrules ensure high quality low loss connections
- Ultra high performance zirconia ferrules
- Durable construction provides reliable mating every time
- Standards compliant insertion and return loss
- Fully factory tested using standards compliant test methods
- Broad stockholding, plus any length made to order
- Specialists in uncommon connectors, hybrid leads and & coloured varieties.

Applications

- Telecommunications interconnection points
- Data centre equipment, cross connect and lead-ins
- LAN, SAN and Optical Channel Fibre networks
- FTTx end user patch points
- Communications room equipment patching
- Fibre test equipment.



Technical Specifications

Applicable Connectors	SC, SCA, LC, LCA, ST, FC a			
Fibre Mode	OM1	OM3	OM4	OS 1/2
Core/Cladding (um)	62.5/125	50/125	50/125	9/125
Fibre Conformance	TIA/EIA - 492AAAA	ITU G651.1	ITU G651.1	ITU G652.D b
Insertion Loss (max dB)	0.30	0.30	0.30	0.25
Insertion Loss (avg dB)	0.15	0.15	0.15	0.18
Insertion Loss (random)	0.20	0.20	0.20	0.18
Return Loss (dB)	N/A	N/A	N/A	APC: >60 PC: >50
Jacket Material	LOW SMOKE ZERO HALOGEN (LSZH) OR POLYVINYLE CHLORIDE (PVC)			
Jacket Diameter (mm)	2.0 OR 3.0			
Reinforcing Member	ARAMID YARN			
Crush (N/100mm²)	1000 C			
Tensile Load Short Term (N)	16 C			
Tensile Load Long Term (N)	80 C			
Operating Temp (°C)	-20 TO +60			

Applicable Standards

Insertion Loss	ALL SC, SCA, LC, LCA, ST, FC PATCH LEADS COMPLY WITH THE LOSS REQUIREMENTS OF ISO/IEC 61300-3-4, ISO/IEC 61300-3-34 & AS/NZS ISO/IEC 14763.3
Return Loss	ALL SINGLE MODE PATCH LEADS COMPLY WITH THE RETURN LOSS REQUIREMENTS SET OUT IN ISO/IEC 61300-3-6
Cable Attenuation	CABLE ATTENUATION FALLS BELOW LEVELS SPECIFIED IN AS/NZS 3080
Testing	ALL TESTING IS COMPLETED WITH REFERENCE GRADE PATCH LEADS AND PRECISION ZIRCONIA SLEEVE ADAPTERS AND MEET ALL REQUIREMENTS FOR TESTING IN AS/NZS ISO/IEC 14763.3
Fibre Standards	SINGLE MODE PATCH LEADS MEET ITU 652.D & TIA/EIA 492 CAAA REQUIREMENTS OM3 & OM4 PATCH LEADS MEET ITU 651.1 & TIA/EIA 492 AAAB REQUIREMENTS OM1 MULTIMODE PATCH LEADS MEET REQUIREMENTS SET OUT IN TIA/EIA 492 AAAA
Low Smoke Zero Halogen	ALL LSZH PATCH LEADS MEET THE REQUIREMENTS FOR FLAME AND FIRE RETARDANT PROPERTIES, LOW SMOKE OPACITY AND NIL HALOGENS AS SET OUT IN IEC 60332-1, IEC 60332-3, IEC 1034-1/2, & IEC 60754-1/2

Ordering Information

LC	LC	1	D	01.5M	AQ
Connector Type	Cabel Mode	Core Count	Length (m)	Jacket Colour	
SC: SC/UPC SCA: SC/APC LC: LC/UPC LCA: LC/APC ST: ST/UPC FC: FC/UPC FCA: FC/APC	1: OS1/2 2: OM1 3: OM3 4: OM4	S: Simplex D: Duplex		AQ: Aqua YL: Yellow PL: Purple BK: Black PK: Pink RD: Red BL: Blue	